



Automotive Car Electrical Parts Components Rear Taillight Assembly For Geely Geometry C

Our Product Introduction

for more products please visit us on auto-partsspare.com

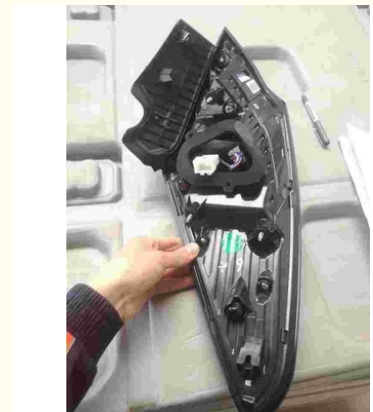
Basic Information

- Place of Origin: China zhajiang
- Brand Name: GEELY
- Model Number: 7057027700
- Minimum Order Quantity: 1
- Price: RMB+420+PC
- Packaging Details: carton packaging,
- Delivery Time: 20-30Work days
- Payment Terms: MoneyGram
- Supply Ability: 50000+PC+30

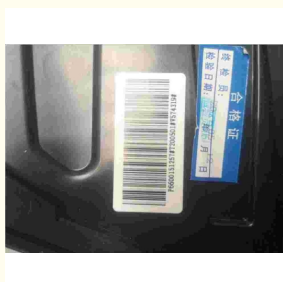


Product Specification

- Product Name: Rear Taillight Assembly
- Color: Black
- Type: Car Electrical Parts
- Material: Plastic
- Weight: Light Weight
- Car Make: Geely Geometry C
- Highlight: Car Electrical Parts Taillight Assembly, Car Electrical Parts Rear Taillight, automotive electrical components Rear Taillight



More Images



Product Description

Geely Geometry C rear taillight assembly

The rear taillight assembly of Geometry C has certain advantages in improving driving safety and increasing vehicle recognition and aesthetics. The LED technology, intelligent control technology and heat dissipation technology can also improve the performance and reliability of the taillights.

- **Advantages:**
- **Improve driving safety:** The rear taillight assembly can provide the rear lighting and signal instructions of the vehicle, making it easier for the rear vehicles and pedestrians to detect the driving status of the vehicle, thus improving driving safety.
- **Increase vehicle recognition:** The unique taillight design can increase the vehicle's recognition and brand characteristics, making the vehicle more eye-catching on the road.
- **Beautiful:** The design of the taillight assembly can match the overall appearance of the vehicle and improve the aesthetics of the vehicle.
- **Principle:** The rear taillight assembly of geometric C adopts LED light source to achieve different lighting effects through the control circuit, such as brake lights, turn signals, reversing lights, etc. When the vehicle brakes, the brake light will turn on; when the vehicle turns, the turn signal will flash; when the vehicle reverses, the reversing light will turn on.
- **Features:**
- **Through design:** The rear taillights of Geometry C adopt a penetrating design to make the rear of the vehicle look wider and more stable.
- **Blackening treatment:** Both sides of the taillights are blackened, which increases the sense of movement of the vehicle.
- **216 LED light sources:** The taillight is composed of 216 LED light sources, and the luminous effect is more uniform and bright.
- **Technology:**
- **LED technology:** LED light source has the advantages of high brightness, low energy consumption, long life, etc., which can provide better lighting effect and lower energy consumption.
- **Intelligent control technology:** The rear taillight assembly can be intelligently controlled through the vehicle's control system, such as automatically adjusting the brightness and automatically switching the light mode according to the speed and steering angle.
- **Heat dissipation technology:** In order to ensure the life and stability of the LED light source, the rear taillight assembly needs to adopt effective heat dissipation technology to dissipate heat in time.

Product name	rear taillight assembly
Color	Black
Type	Car Electrical Parts
Material	plastic
Weight	light weight
car make	Geely Geometry C



Contact information:

Tel: +86 010-52239790

Mobile +86 13810191349

WhatsApp:+86 13810191349

Operating China Geely Automobile, China FAW, full series of original factory spare parts



13810191349



bjxdhysmyxgs@163.com



auto-partsspare.com

69 South Fourth Ring Road East, Chaoyang District, Beijing