



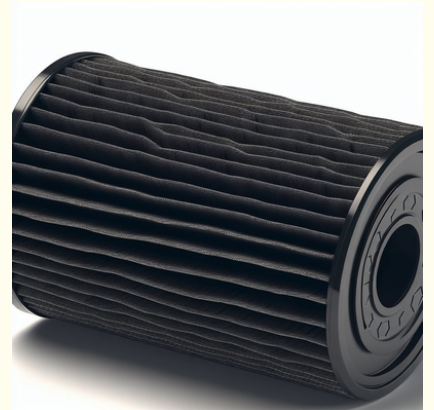
Car AC Engine Air Filter Replacement Key Component For Geely Xingyue L

Our Product Introduction

for more products please visit us on auto-partsspare.com

Basic Information

- Place of Origin: China Zhejiang
- Brand Name: GEELY
- Model Number: 8025530600
- Minimum Order Quantity: 100
- Price: RMB+15+pc
- Delivery Time: 20-30Work days
- Payment Terms: MoneyGram
- Supply Ability: 50000+pc+30day



Product Specification

- Product Name: Geely Xingyue L Air Conditioning Filter
- Color: Gray
- Material: Plastic
- Application: Car Air Conditioning
- Car Make: Geely Xingyue L
- Quality: Excellent Quality
- Highlight: **Geely Xingyue L air filter, car AC engine filter replacement, Geely Xingyue L AC component**



More Images



Product Description

Geely Xingyue L air conditioning filter

I. Positioning of key components

As an important cover on the top of the FAW Senya engine, the valve chamber cover is like a guardian, firmly placed above the engine valve chamber. It is not only a part of the appearance structure of the engine, but also a key barrier to maintain the normal working environment inside the engine.

II. Material and process advantages

1. It is made of high-quality and durable materials, usually high-temperature-resistant, oil-resistant engineering plastics or aluminum alloys. These materials can withstand the high temperature and the erosion of various oils generated during the operation of the engine, ensuring that they are not easy to deform and damage in long-term use.
2. It is processed through a precise manufacturing process. The surface is smooth and the edge lines are smooth. Accurate mold and strict production process control ensure good sealing between the valve chamber cover and the engine cylinder block, and prevent oil leakage and dust impurities from entering the valve chamber.

III. Excellent sealing performance

1. Equipped with high-quality sealing gaskets or rubber sealing rings, these sealing elements are closely integrated with the valve chamber cover, which can effectively prevent the oil from leaking from the connection between the valve chamber and the valve chamber cover during the engine operation.
2. Good sealing performance can not only keep the oil inside the engine stable, ensure that all parts of the engine are fully lubricated, but also prevent external impurities from entering the valve chamber and affecting the normal operation of precision components such as the valve.

IV. The embodiment of functional diversity

1. It provides a relatively closed and stable working space for the valve mechanism of the engine. It protects important components such as valves and camshafts from external dust, moisture and other pollutants, and ensures that these key components can operate efficiently in a clean environment.
2. The valve chamber cover is usually integrated with some installation positions of engine-related accessories, such as oil filling port, crankcase ventilation pipe interface, etc. The oil filling port is reasonably designed, which is convenient for the owner to add oil quickly and accurately when needed, while the crankcase ventilation pipe interface ensures the balance of the internal pressure of the engine and the reasonable discharge of exhaust gas.

V. Convenient installation and reliability

1. The design fully takes into account the adaptability of the FAW Senya engine, and the installation hole position is accurate, which can be easily installed and fixed with the engine cylinder block. The installation process is simple and fast, without complex tools and professional skills. Ordinary car owners can also replace it under certain conditions (but it is recommended that professionals install it to ensure the quality of the installation).
2. Once installed in place, the valve chamber cover can be firmly fixed on the engine. During the driving process of the vehicle, even in the face of various bumps and vibrations, it can always remain stable without loosening, shifting, etc., providing a reliable guarantee for the continuous and stable operation of the engine.

VI. Appearance and brand logo

1. The appearance design is simple and generous, and the lines are smooth, which is coordinated with the overall shape of the FAW Senya engine, which is not only practical, but also improves the beauty of the engine compartment to a certain extent.
2. The valve room cover is usually printed with the brand logo and related product information of FAW Senya, which is not only a symbol of product identity, but also reflects the brand's commitment and confidence in product quality.

In a word, the FAW Senya valve chamber cover provides a solid guarantee for the normal operation of the engine with its excellent material, exquisite craftsmanship, reliable sealing performance and various functions. It is an indispensable and important part of the FAW Senya automobile engine system.

product name	Geely Xingyue L air conditioning filter
color	gray
material	plastic
application	Car Air Conditioning
car make	Geely Xingyue L
quality	excellent quality



Contact information:

Tel: +86 010-52239790

Mobile +86 13810191349

WhatsApp:+86 13810191349

Operating China Geely Automobile, China FAW, full series of original factory spare parts



Xingda Hongyun (Beijing) International Trade Co., Ltd.



13810191349



bjxdhysmyxgs@163.com



auto-partsspare.com

69 South Fourth Ring Road East, Chaoyang District, Beijing